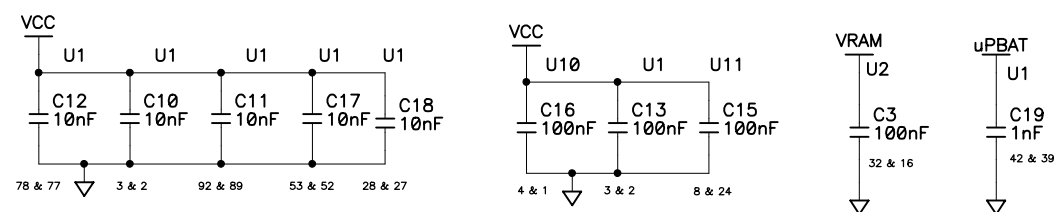


REVISION HISTORY			REVISION APPROVAL			
REV	ECO	DESCRIPTION	PROJECT ENGINEER	APPROVAL DATE	DOCUMENT CONTROL	APPROVAL DATE
B	E11182	CHANGE R14 FROM 1K TO 1.3K TO CONFORM WITH UL REGULATIONS ON CURRENT LIMITING RESISTORS	RJH	31AUG00	KAH	31AUG00
C	E11620	CHANGE R14 FROM 1.3K TO 2K. ADDED EXTERNAL 32KHz OSCILLATOR. MODIFIED VBAT CIRCUITRY	DM	8/06/01	KIS	08/03/01
D	E11778	REMOVE UNUSED FLASH REFERENCE OPTION.	DM	12/20/01	KIS	12/20/01
E	E11787	SHOW R3,9 NOT STUFFED, AND R1 IS 5% TOL.	DM	1/2/02	KIS	1/2/02
F	E11942	REMOVE THERMISTOR AT RT1.CHANGE R12 TO 11K. REVISE NOTE TO INDICATE RESISTORS ARE NOW 1/16W, NOT 1/10W.	EP	5/10/02	KIS	5/9/02

TABLE A

REF DES	DEVICE	DEVICE VOLTAGE INFORMATION					DEVICE: FILTER CAP REF DES(S)
		AGND	GND	VCC	VRAM	NO CONNECTS	
U1	RABBIT 2000		2,27,39 52,77,89	3,28,53, 78,92	42		C13.10 - PIN3, C18,17,12,11 C19 - PIN42 (uPbat)
U2	SRAM*		16		32		C3
U10	ETC811		1	4			C16
U11	FLASH*		24	8			C15



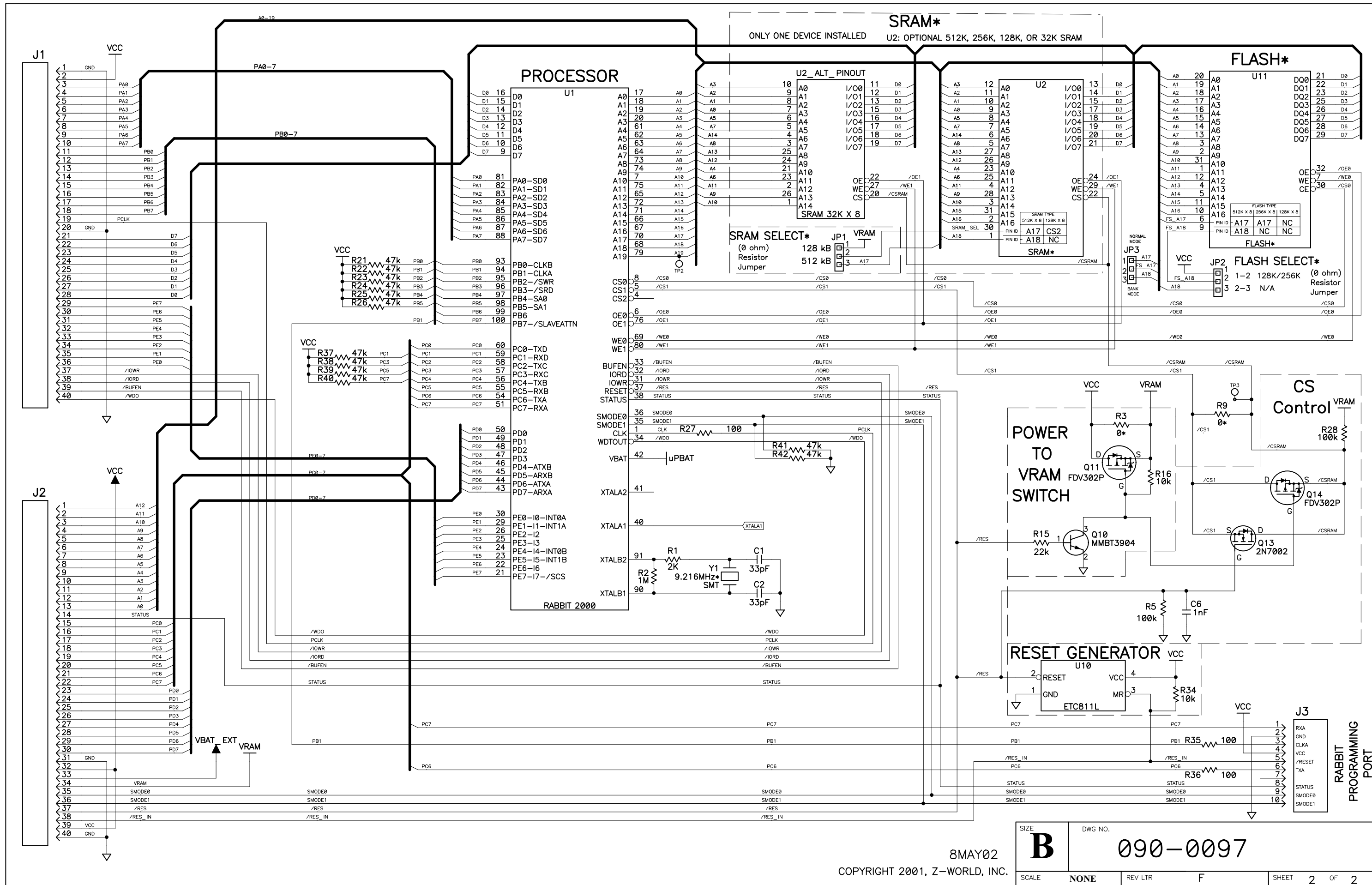
STUFFING TABLE

CIRCUIT	PART	MODEL			
		RCM2000	RCM2010	RCM2020	
SRAM	MAIN	U2	512K SRAM	128K SRAM	128K SRAM
	SRAM SELECT	JP1	ZERO ohm ACROSS PINS 2-3	ZERO ohm ACROSS PINS 1-2	ZERO ohm ACROSS PINS 1-2
FLASH	MAIN	U11	256K FLASH	256K FLASH	256K FLASH
	FLASH SELECT	JP2	ZERO ohm ACROSS PINS 1-2	ZERO ohm ACROSS PINS 1-2	ZERO ohm ACROSS PINS 1-2
		JP3	ZERO ohm ACROSS PINS 1-2	ZERO ohm ACROSS PINS 1-2	ZERO ohm ACROSS PINS 1-2
PROCESSOR CRYSTAL	Y1		12.9024MHz	12.9024MHz	9.216MHz
POWER TO VRAM	R3,9		NOT STUFFED	NOT STUFFED	NOT STUFFED

- NOTES: UNLESS OTHERWISE SPECIFIED;
- ALL RESISTOR VALUES ARE IN OHMS, 1/16W, 5%
 - ALL CAPACITORS ARE 50VDC OR HIGHER.
 - THE ORIGINATION SOURCE OF A VOLTAGE IS REPRESENTED BY (VCC), AND ALL REFERENCES TO THAT VOLTAGE ARE REPRESENTED BY (VCC).
- 4 OUTLINED CIRCUIT MAY NOT BE STUFFED DEPENDING ON MODEL, SEE STUFFING CHART FOR CLARIFICATION.
5. COMPONENT VALUES SHOWN WITH AN ASTERISK (*) FOLLOWING THE VALUE, MAY HAVE DIFFERENT VALUES, OR MAY NOT BE STUFFED DEPENDING ON MODEL. SEE STUFFING CHART FOR CLARIFICATION.

COPYRIGHT 2001, Z-WORLD, INC.

APPEND THE FOLLOWING DOCUMENTS WHEN CHANGING THIS DOCUMENT:	DRAWING CONTENT:		TITLE SCHEMATIC DIAGRAM RCM2000 SERIES RABBITCORE	 2900 SPAFFORD ST. DAVIS, CA 95616 530-757-4616
	DRAWN BY: (INITIAL RELEASE)	31JAN00		
	REVISD BY: K.SCHALLER	8MAY02		
	APPROVALS: INITIAL RELEASE			
PROJECT ENGINEER:	DM	04MAY00	SIZE B	DWG NO. 090-0097
ENGINEERING MANAGER:	---	---	SCALE NONE	RELEASE DATE 03MAY00
SIGNATURES	DATE		SHEET 1 OF 2	



8MAY02
COPYRIGHT 2001, Z-WORLD, INC.

SIZE	DWG NO.
B	090-0097
SCALE	REV LTR
NONE	F
SHEET	OF
2	2